



**Food Liaison Pty Limited** A.B.N. 59 001 066 672

**Post:** Box 7336, Canberra MC, ACT, 2610, Australia  
**Phone:** (02) 6297 8000  
**Fax:** (02) 6297 8800  
**Internet:** [www.foodliaison.com.au](http://www.foodliaison.com.au)  
**E-mail:** [foodlaw@foodliaison.com.au](mailto:foodlaw@foodliaison.com.au)

## Installation Guide for **FOODfind Versions 68** and later

FOODfind 68 introduces a new version of the Folio Viewer (4.7.2) and also utilises a new installation engine to provide reliable installations on newer versions of Microsoft Windows, especially Windows 7. The aim of this guide is to assist you with installing FOODfind and provide advice should you run into difficulty.

### System Requirements

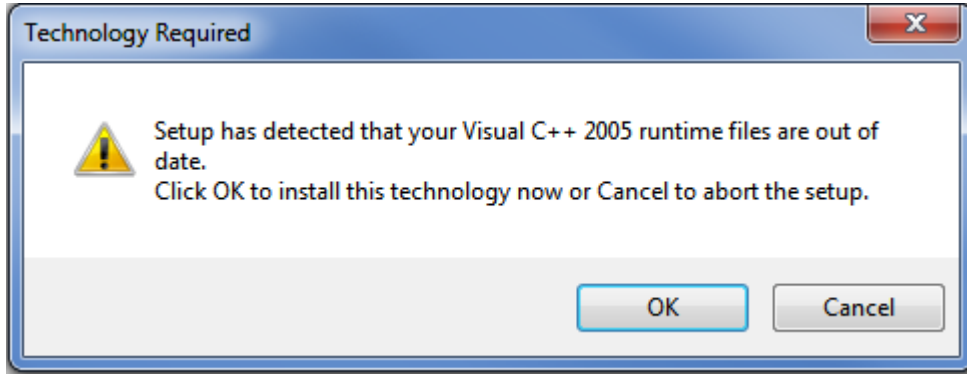
- Microsoft Windows XP, Vista, Windows 7 or Windows 8 operating system
- As a minimum you need a system capable of running your chosen operating system.
- A minimum of 100MB free hard disk space
- Microsoft Visual C++ 2005 Redistributable Runtime Libraries (installed automatically, see the Troubleshooting section for more information)

### Installation Instructions

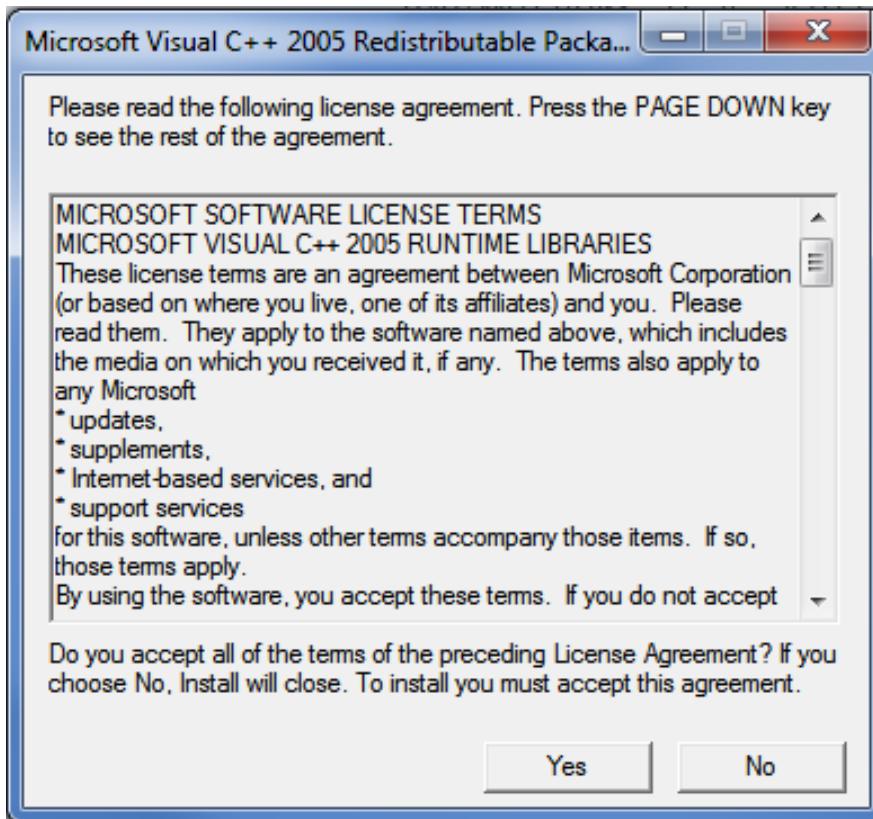
1. Log on to your computer with an account that has administrative privileges (i.e. sufficient privilege to install and uninstall application software).
2. Uninstall any versions of FOODfind earlier than FOODfind68 that already exist on your computer.
3. Ensure you have access to the appropriate FOODfind installation executable file. This will normally be made available either on CDROM or via download from the Food Liaison website.
4. Double click on the FOODfindNN.exe file (e.g. FOODfind68.exe for version 68) to commence the installation (CDROM users may find that the installation starts automatically when the CDROM is inserted).

*If you have any questions about FOODfind please email [foodlaw@foodliaison.com.au](mailto:foodlaw@foodliaison.com.au) or contact Food Liaison Pty Ltd on 02 6297 8000 for assistance.*

5. If the following dialog box appears, select OK to install the Microsoft Visual C++ 2005 runtime files. These files are required for correct operation of Folio Views.



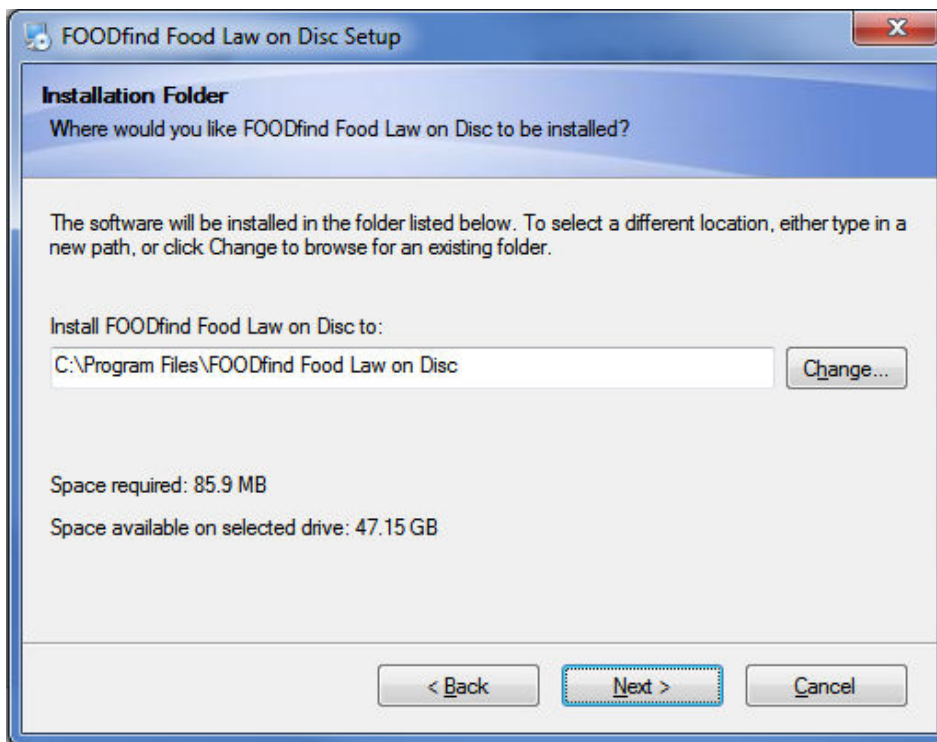
6. You need to accept the Microsoft Licensing Agreement to complete the installation.



7. Click Next at the Welcome dialog

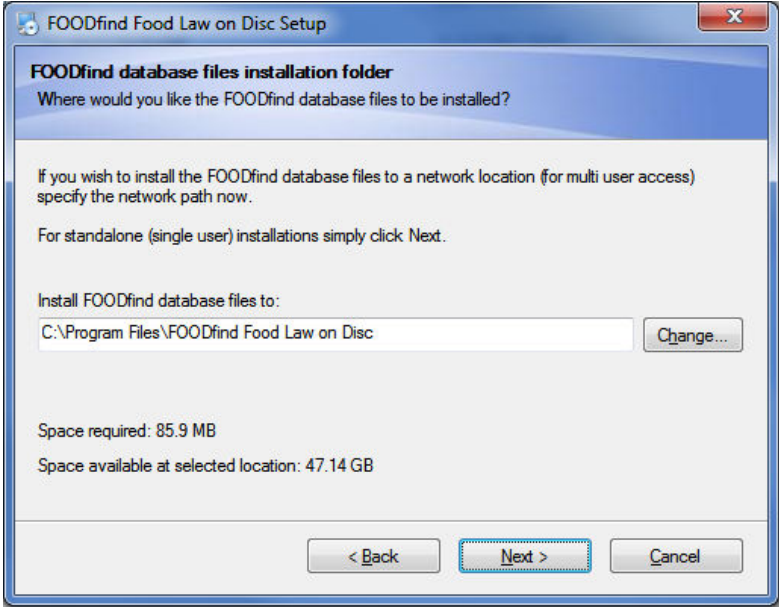


8. Choose the folder where the Folio Viewer system files will be installed. In most cases there will be no need to change the default folder.



*If you have any questions about FOODfind please email [foodlaw@foodliaison.com.au](mailto:foodlaw@foodliaison.com.au) or contact Food Liaison Pty Ltd on 02 6297 8000 for assistance.*

- 9. Choose the location to install the FOODfind database files. For standalone, single user access there will be no need to change the default location. **For network (multi-user) access you may need to specify a network location (e.g. [\\server\share](#)).** Refer to the “Network Installation Notes” section of this document for more detail.

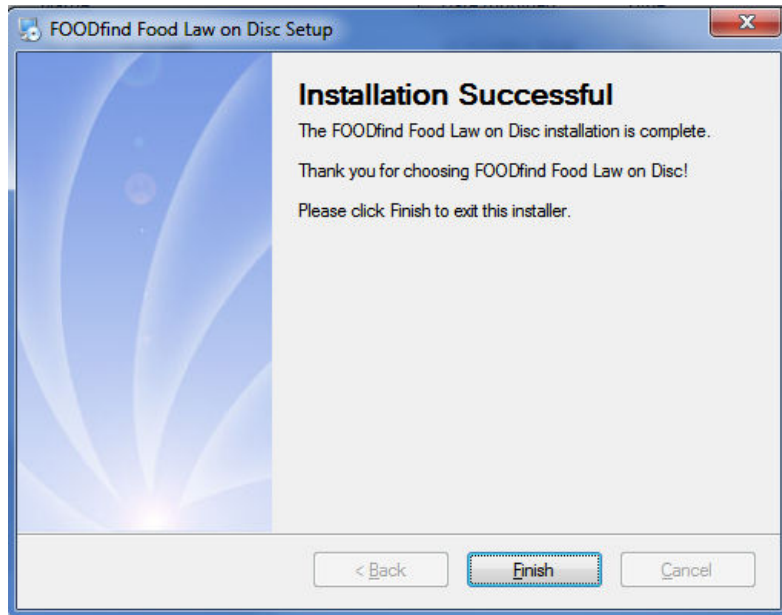


- 10. Confirm your selections at the Ready to Install dialog, then click Next to continue.



*If you have any questions about FOODfind please email [foodlaw@foodliaison.com.au](mailto:foodlaw@foodliaison.com.au) or contact Food Liaison Pty Ltd on 02 6297 8000 for assistance.*

11. The installation will proceed and once complete the Installation Successful dialog will be displayed.



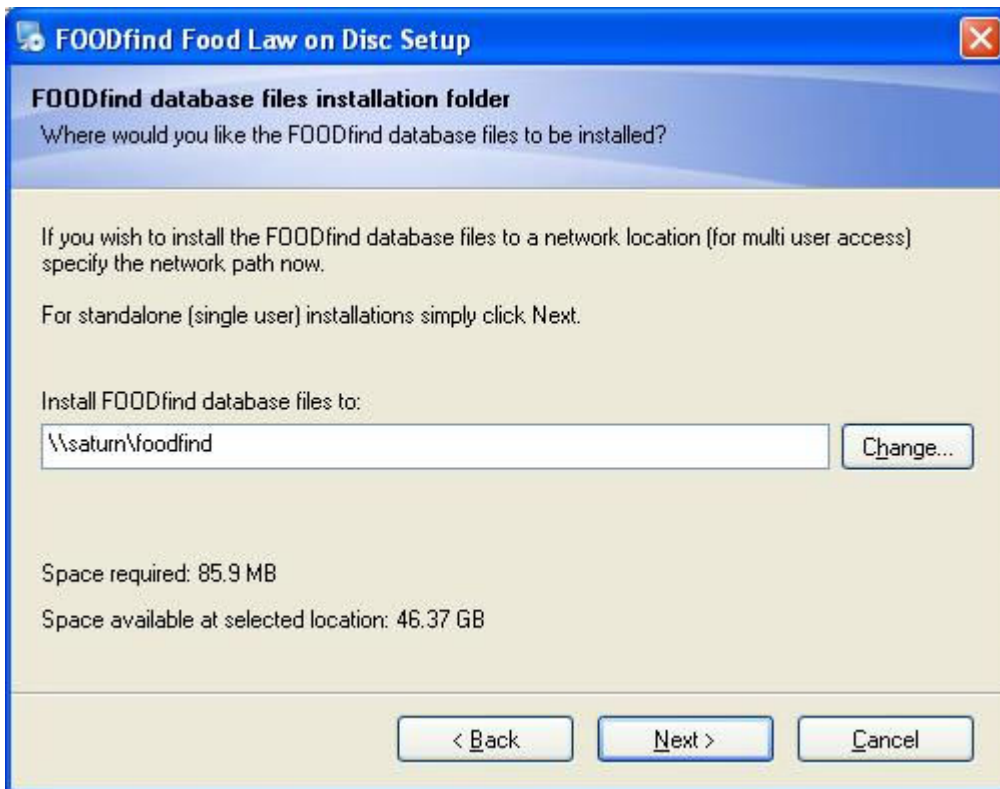
12. Open FOODfind using either the newly created desktop icon or via Start -> All Programs -> FOODfind Food Law on Disc menu.

*If you have any questions about FOODfind please email [foodlaw@foodliaison.com.au](mailto:foodlaw@foodliaison.com.au) or contact Food Liaison Pty Ltd on 02 6297 8000 for assistance.*

## Network Installation Notes (Using FOODfindnn.exe)

***Please note: It is your responsibility to ensure that FOODfind is accessed by no more machines than permitted by your network licence. Should you require additional licences please contact Food Liaison Pty. Limited for pricing.***

The Installation Instructions describe how to choose a network location for the FOODfind database files. For example, to install the database files to a share named FOODfind on a server named SATURN the UNC path would be;



The FOODfind installer will automatically create a folder named NFO at the chosen network location. This folder contains four files that change with each release of FOODfind. The FOODfind client PC will now access the FOODfind database from the network share. Notice in the properties of the FOODfind icon that UNC notation is used to point to the network location. The Folio Viewer application is still installed locally on the PC, only the data files are accessed over the network.

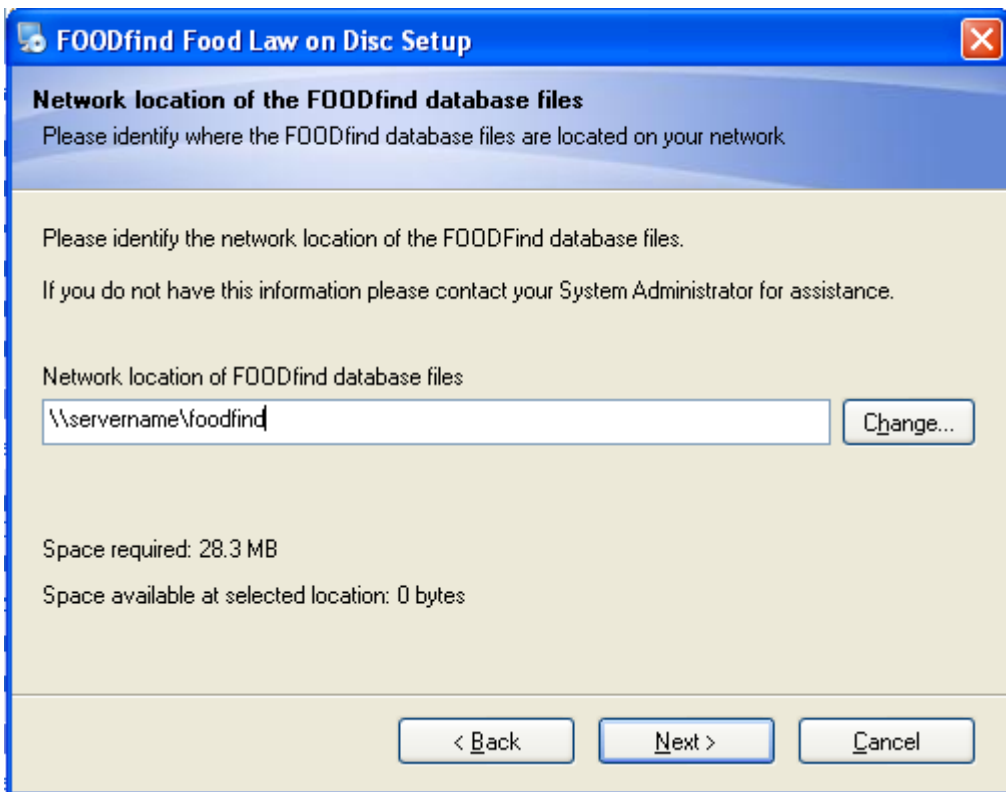
When a new version of FOODfind is released you can easily update the data on the network without any intervention required on the client machines. Simply update the contents of the network share \NFO folder. This will update the Folio database to the new version. Version 69 and later of FOODfind will provide a separate copy of the NFO folder on the installation CDROM specifically to aid network administrators. The next section describes another method of installing FOODfind on a network.

*If you have any questions about FOODfind please email [foodlaw@foodliaison.com.au](mailto:foodlaw@foodliaison.com.au) or contact Food Liaison Pty Ltd on 02 6297 8000 for assistance.*

### **Network Installation Notes (using FOODfindNetworkClient.exe)**

For IT System Administrators that are deploying a larger number of network clients and perhaps wish to reduce the size of the installation file needed to be copied to remote sites another method of installation is provided. On the installation CDROM you will find a folder named "NetworkClient". This folder contains FOODfindNetworkClient.exe which is an installation package that contains only the Folio View software required for viewing the FOODfind database. Folio Views is installed to the local C: drive (by default C:\Program Files\FOODfind Food Law on Disc). The FOODfind database files are not included within the installation package, however they are supplied on the installation CDROM in a folder named "nfo".

Prior to distributing FOODfindNetworkClient.exe to your client workstations administrators must copy the entire nfo folder to a network share (E.g. \\servername\foodfind\nfo). This folder can be updated with each release of FOODfind, updates to the client workstation are not required (unless a new version of Folio Views is needed in which case notification will be given). **Note:** Client workstations require Modify access to the network file share.



*If you have any questions about FOODfind please email [foodlaw@foodliaison.com.au](mailto:foodlaw@foodliaison.com.au) or contact Food Liaison Pty Ltd on 02 6297 8000 for assistance.*

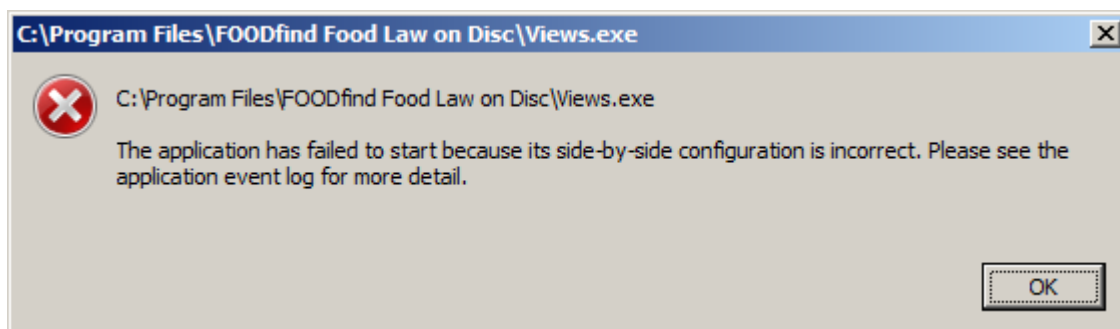


## **Trouble Shooting**

**An error message "The application failed to start because the application configuration is incorrect"**

**OR**

**"The application has failed to start because its side-by-side configuration is incorrect" appears when I try to start FOODfind.**



These errors can occur when the required Microsoft Visual C++ files have not installed correctly. There are two methods available to rectify this issue;

### **Method 1**

Open the FOODfind installation folder on your computer. If you perform a default installation the folder path will be;

**C:\Program Files\FOODfind Food Law on Disc**

Locate a file named "vcredist\_x86.exe". Double click on "vcredist\_x86.exe", accept the license agreement. The installation will proceed automatically, however it doesn't announce when it's finished – the installation window just closes.

You may now open FOODfind!

*If you have any questions about FOODfind please email [foodlaw@foodliaison.com.au](mailto:foodlaw@foodliaison.com.au) or contact Food Liaison Pty Ltd on 02 6297 8000 for assistance.*



## **Method 2**

Please download the latest version of the Visual C++ files from Microsoft via the link below;

<http://www.microsoft.com/download/en/details.aspx?id=3387>

Once you have downloaded “vcredist\_x86.exe” double click on the file to commence installation. You need to accept the Microsoft License agreement to proceed. The installation will go through by itself, however it doesn’t announce when it’s finished – the installation window just closes.

You may now run FOODfind!